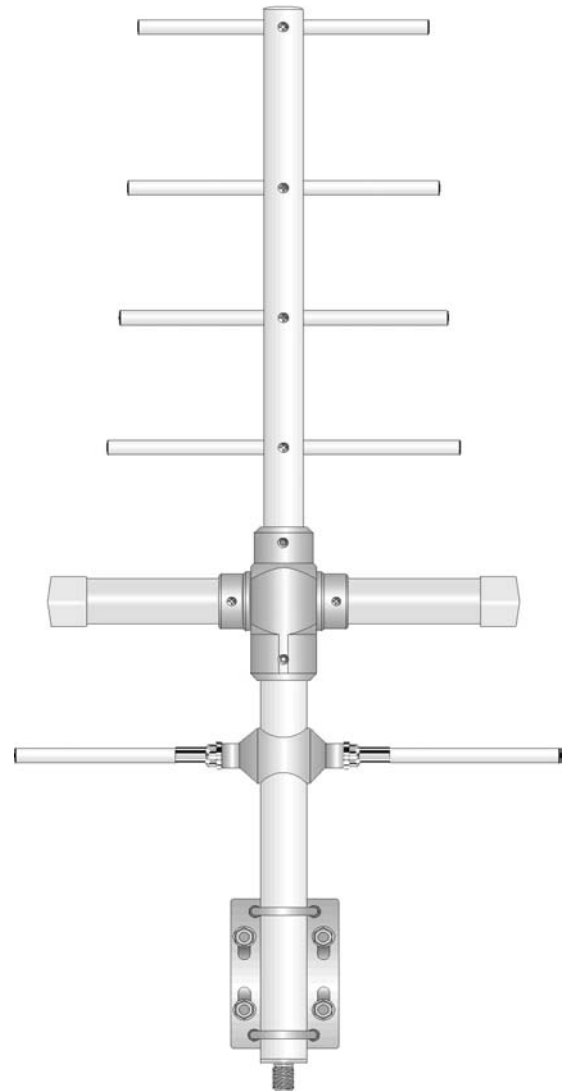


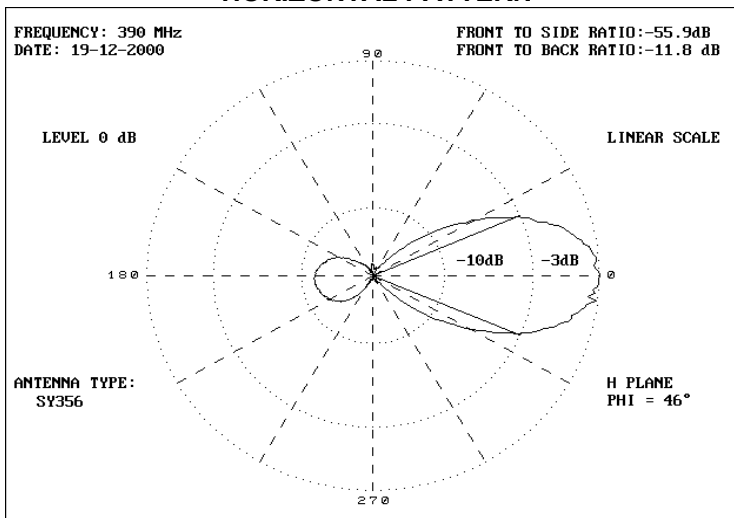
6 elements yagi antenna  
Fibreglass covered radiator  
Lightning protection

**MAIN CHARACTERISTICS**

Type	: 6 el. yagi
Frequency range	: 380 - 400 MHz
Input impedance	: 50 ohm
V.S.W.R.	: < 1:1.5
Beamwidth -3 dB	: H plane 46° - E plane 56°
Maximum rated RF power	: 200 watt
Polarization	: Vertical or Horizontal
Gain	: 8 dBd
Type of connection	: N female
Mounting hole	: From 30 to 62 mm master tube
Boom material	: Anodized Aluminium
Elements material	: Anodized Aluminium
Wind resistance	: 120 Km/h.
Dimensions	: 1230 mm x 390 mm
Net weight	: 2370 g
Working temperature	: From -35° to + 60°



**HORIZONTAL PATTERN**



**VERTICAL PATTERN**

